

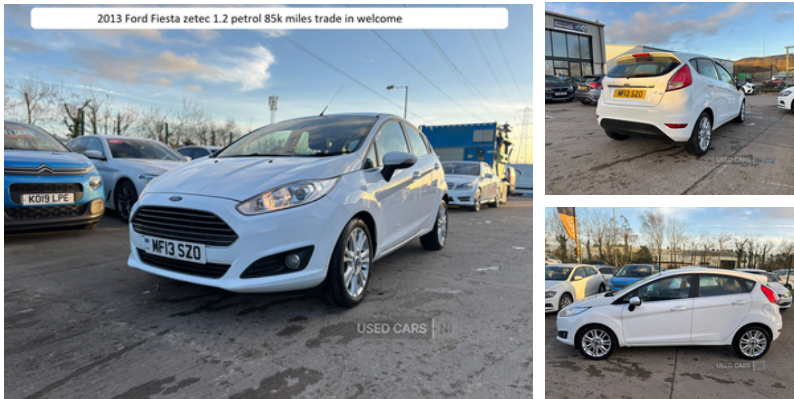


unit 8 pembroke loop road springbank industrial estate springbank lane bt17 0fe, Belfast, BT17 0fe
Desy: 07392674507

Ford Fiesta 1.25 82 Zetec 5dr | Mar 2013

TRADE IN WELCOME

£3,995



belfastautosales.co.uk

2013 ford fiesta zetec 1.2 petrol 5 speed manual , electric windows and mirrors air con alloys bluetooth 85k miles full service history and just serviced for sale mot till october 25 , £35 road tax £3995

trade in welcome indoor viewing

Vehicle Features

3 point rear seatbelts x3, 3 spoke leather steering wheel, 6 speakers, 60/40 split folding rear seat, ABS+EBA, Adjustable head restraints, Ambient lighting, Auxiliary input socket, Body colour door handles, Body colour electric adjustable heated door mirrors, Body colour tailgate handle, Boot carpet, Chrome beltline, Chrome surround for front fog lights, Chrome tailgate handle, Cloth upholstery, Courtesy headlamp delay, Curtain airbags, Day running lights, Driver and passenger airbags, Drivers knee airbag, Electric front windows/one touch facility, Electric power steering, ESP + traction control, Footwell illumination, Front fog lights, Front map reading lights, Front passenger airbag deactivation, Front seatback pockets, Front side airbags, Hill start assist, Illuminated glovebox, Immobiliser, Leather trimmed handbrake handle, Load area light, Manual air conditioning, Manual seat adjustment, Pollen filter, Quickclear heated windscreen, Rake/reach adjustable steering wheel, Rear wiper, Remote central locking, Steering wheel mounted controls, Trip computer, Upper front grille chrome surround

Miles:	85000
Fuel Type:	Petrol
Transmission:	Manual
Colour:	White
Engine Size:	1242
CO2 Emission:	120
Tax Band:	C (£35 p/a)
Body Style:	Hatchback
Insurance group:	7E
Reg:	MF13SZO

Technical Specs

DIMENSIONS

Length:	3969mm
Width:	1722mm
Height:	1495mm
Seats:	5
Luggage Capacity (Seats Up):	290L
Gross Weight:	1530KG
Max. Loading Weight:	475KG

PERFORMANCE & ECONOMY

Fuel Consum. (Urban Cold):	41.5MPG
Fuel Consum. (Extra Urban):	67.2MPG
Fuel Consum. (Combined):	54.3MPG
Fuel Tank Capacity:	42L
Number Of Gears:	5 SPEED
Top Speed:	104MPH
Acceleration 0-100 km/h:	13.3s
Engine Power BHP:	80.5BHP